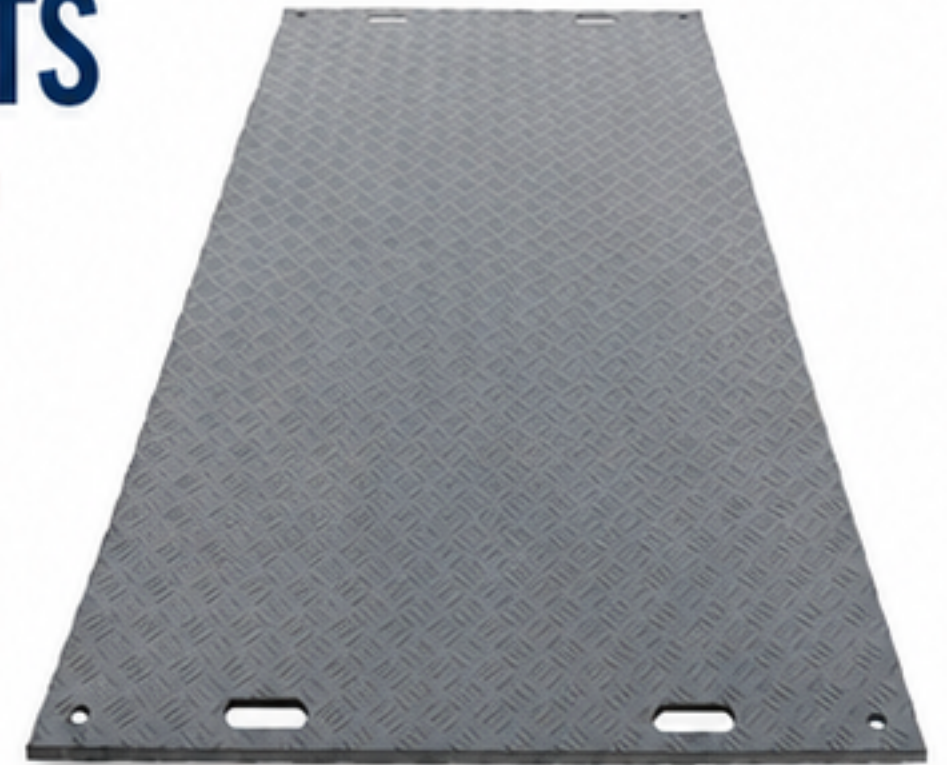


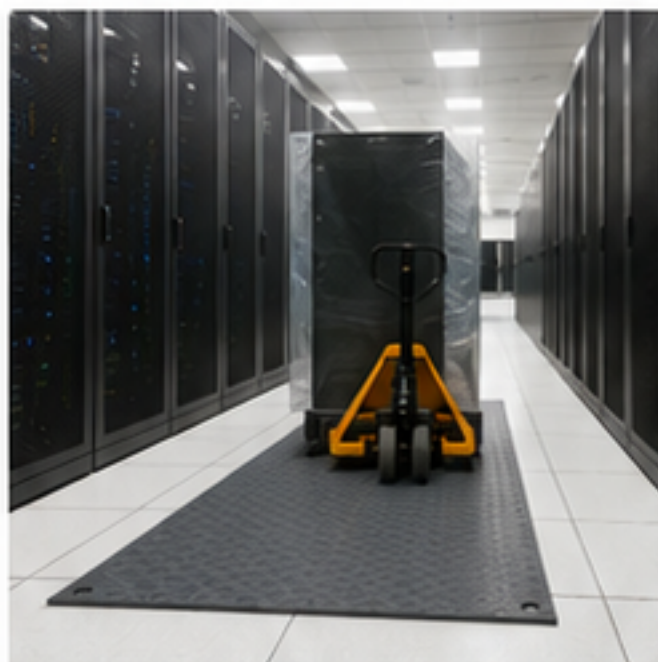
# MRI MEDIUM DUTY ACCESS MATS


## Raised access floor protection and temporary access routing

MRI owns and supplies medium duty access mats as part of our controlled lifting, movement and installation works. We mostly use this matting to protect raised access flooring and finished internal surfaces when travelling across site with movement equipment. The mats help create temporary routes for pallet trucks, skates and other movement systems while reducing the risk of damage to sensitive floors and ground surfaces.





NOMINAL SIZE	APPROX. WEIGHT	INDICATIVE LOADING	MATERIAL
 <b>2.4m x 1.2m</b> 12mm thick mat	 <b>36kg</b> Normally handled by two people	 <b>15-20t</b> Subject to route and conditions	 <b>Recycled HDPE</b> Reusable / recyclable product basis



 **DATA CENTRES**  
 Protect raised access flooring during equipment movement.

 **PLANT ROOMS**  
 Create temporary routes for safe movement of plant and equipment.

 **COMMERCIAL INTERIORS**  
 Protect finished surfaces during controlled movement works.

 **EXTERNAL USE**  
 Temporary ground protection for vehicles and equipment.

### Typical MRI uses

- ✓ Protecting raised access flooring during internal plant movement.
- ✓ Creating temporary travel routes through data centres, plant rooms and commercial buildings.
- ✓ Floor and surface protection during controlled movement works using pallet trucks, skates and similar equipment.
- ✓ Temporary pedestrian or service access across sensitive ground and finished areas.

### Main features

- ✓ Diamond-pattern upper surface to improve grip.
- ✓ Smooth underside to help protect sensitive surfaces.
- ✓ Corner connection points for cable ties or mechanical connectors.
- ✓ Reusable, easy to clean and quick to deploy.
- ✓ Flexible profile to help follow minor unevenness in the route.

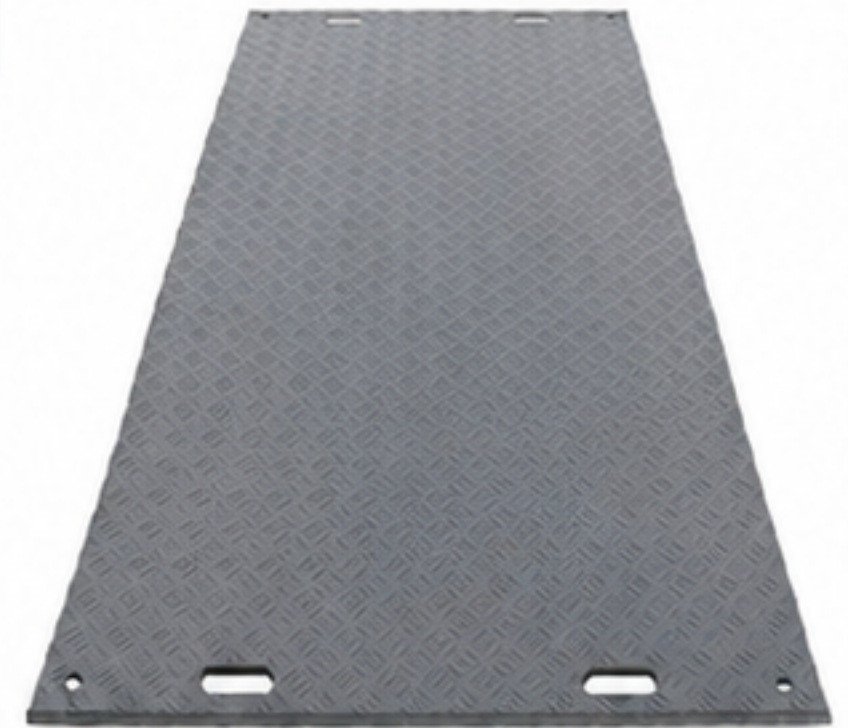



**Important: The stated loading is indicative product information only. It is not a raised access floor assessment, structural floor loading check, ground bearing calculation or temporary works design. Final suitability must be confirmed against the actual route, floor build-up, point loading, wheel / contact area, ground conditions, temperature and installation method.**

# TECHNICAL DATA, USE GUIDANCE AND MRI APPLICATIONS


## MRI product information for medium duty access matting

Item	MRI data sheet information
Product type	Medium duty temporary access / floor protection mat
Nominal full mat size	2.4m x 1.2m x 12mm
Approx. mat weight	36kg per full mat
Material	100% recycled HDPE / recyclable product basis
Surface profile	Diamond-pattern top face / smooth underside
Indicative loading	Approx. 15-20 tonnes, subject to route and conditions
Connection options	Cable ties or suitable mechanical connectors
Recommended travel speed	Do not exceed 5mph when travelling over the matting
Typical MRI use	Protecting raised access flooring and finished surfaces during movement works
Not suitable as	A substitute for engineered crane mats, outrigger pads, structural floor checks or ground bearing design




 **Raised access floor protection**



 **Controlled internal movement**



 **Route protection for finished surfaces**

### Why MRI uses this matting

- ✔ Helps protect raised access flooring, finished floors and sensitive surfaces during movement works.
- ✔ Allows MRI to create controlled temporary routes through live and restricted environments.
- ✔ Supports internal logistics on plant movement, offload, final positioning and installation projects.
- ✔ Works alongside MRI's wider turnkey service including storage, delivery, lifting and final placement.

### Installation and use guidance

- ✔ Inspect and prepare the route before laying the matting. Remove debris and trip hazards.
- ✔ Confirm the route, floor build-up and loading suitability before use.
- ✔ Connect mats where route stability or layout requires it.
- ✔ Allow movement / expansion room in connected layouts where required.
- ✔ Avoid aggressive steering, spinning wheels, sudden loading or dragging across the matting.
- ✔ Inspect the route during use and remove any damaged mats or loose connectors from service.
- ✔ Clean and store flat after use. Use gloves when handling.



### Project limitations and client responsibilities

- ✔ The Client / Principal Contractor must confirm raised access floor capacity, floor loadings, ground bearing and route suitability before plant or equipment uses the matting.
- ✔ Point loads, outriggers, steel tracks, crawler loads, unsupported openings, weak floors, poor ground and steep gradients require separate review before use.
- ✔ Do not use with steel tracked vehicles unless specifically reviewed and agreed in writing before use.
- ✔ Any additional matting, relocation, cleaning, damage, loss, standing time or aborted attendance caused by site conditions or changes by others may be chargeable in line with the project quotation / terms.